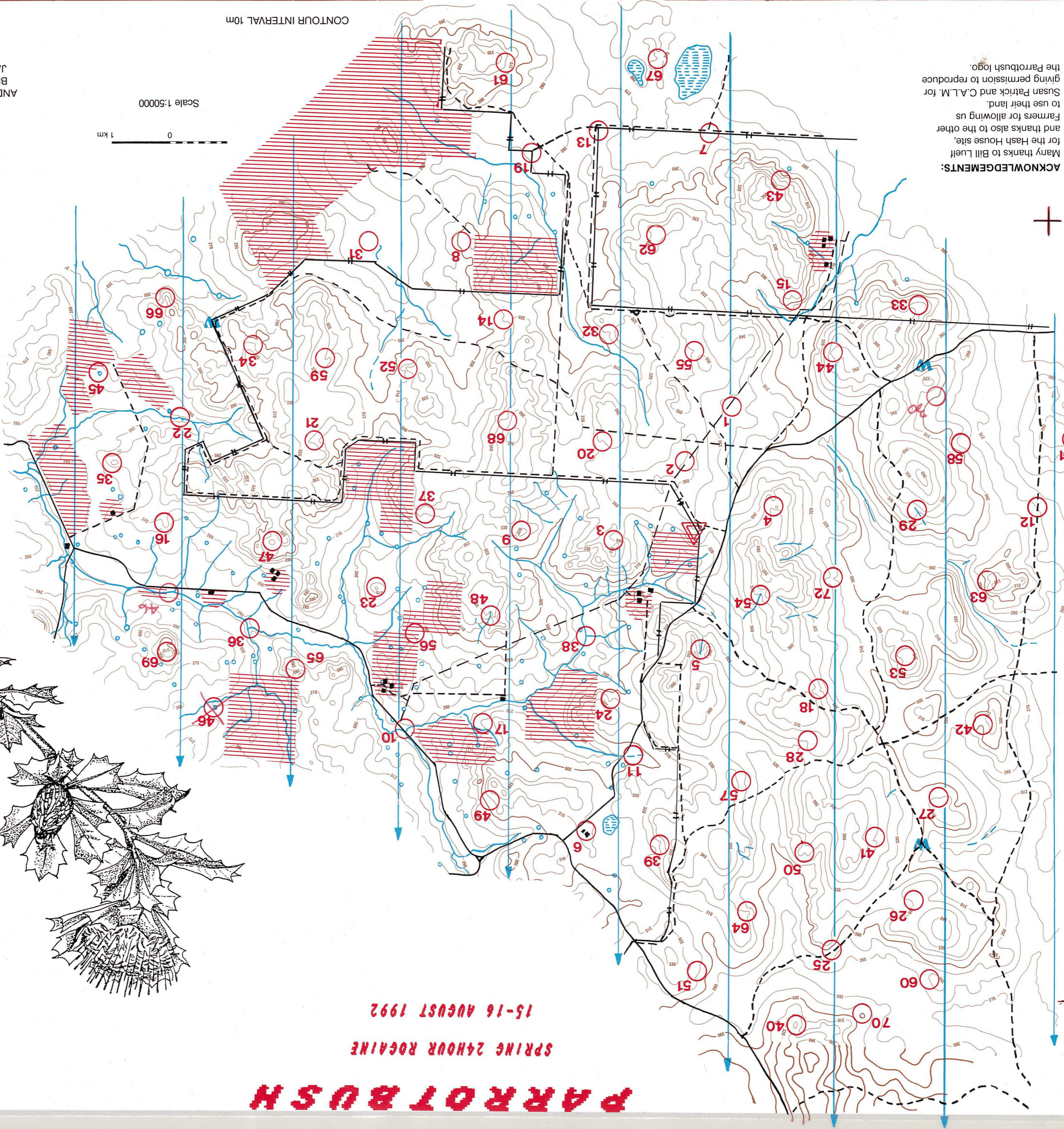
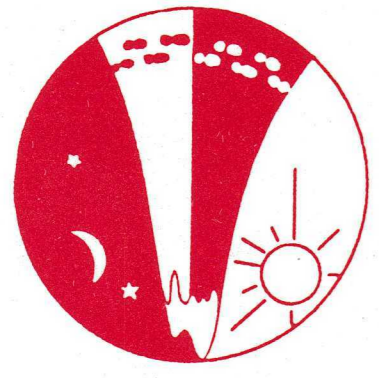


PARROT BUSH

SPRING 24 HOUR ROGAINE
15-16 AUGUST 1992



- ROAD, MAJOR ———
- ROAD, MINOR - - - - -
- POWERLINE ———
- FOREST BOUNDARY ———
- BUILDING ■
- WATERCOURSE ———
- DAM ○
- LAKE/SWAMP ———
- WATER DROP W
- CONTROL ○
- HASH HOUSE ▽
- OUT OF BOUNDS ———



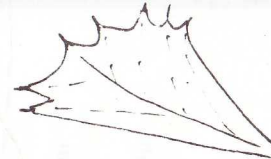
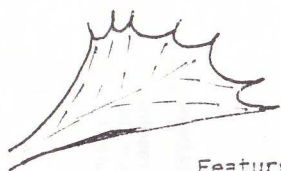
SETTERS
ANDREW THOMAS
BRYAN HARDY
JANE ROBLEY
VETTERS
JOHN BREED
HELEN BREED

ACKNOWLEDGEMENTS:
Many thanks to Bill Lueff
for the Hash House site,
and thanks also to the other
Farmers for allowing us
to use their land.
Susan Patrick and C.A.L.M. for
giving permission to reproduce
the Parrotbush logo.

CONTROL DESCRIPTIONS

THE PARROT BUSH ROGAINE

15-16TH AUGUST, 1992



Feature	Description	Pts.
1. The broad gully		20
2. A power-pole	Then 120m at 240 degrees	20
3. The gully	At the head, on a tree on a large boulder	20
4. A Gully	East of the small knoll	20
5. A watercourse	By a potential 2m waterfall	20
6. A sheep yard	West side of a seeder	20
7. The track junction	Then 25m at 225 degrees	30
8. A rock pile		30
9. The knoll		30
10. The road/creek crossing	(Water-Drop)	30
11. The watercourse	At a fence crossing	30
12. A blazed tree	Then 205m at 90 degrees	30
13. The track junction	Then 100m at 222 degrees (Water)	40
14. The spur	On a coppiced tree	40
15. The small gully	At the head of a watercourse	40
16. The spur	Eastern edge	40
17. A quartzite ridge		40
18. The gully	Between two watercourses	40
19. The fence corner	Then 50m at 135 degrees	50
20. The gully	A 50/30m clearing	50
21. The gully	West of a 1.2m boulder	50
22. A small dam		50
23. The knoll		50
24. The gully	On a watercourse junction	50
25. A blazed tree	Then 80m due North	50
26. A low saddle	Between the gullies	50
27. A clearing 100/50m	N.part, little tree in the rock	50
28. The gully	In the head of a watercourse	50
29. The shallow gully	On a watercourse	50
30. The spur	At the foot, on the N.W. edge of a large rock surface	50
31. A knoll		60
32. The shallow gully	On an indistinct watercourse	60
33. The spur	The S. edge, at the E. end of a granite slab 70/20m	60
34. The spur	S.W. side of a 2.5m boulder	60
35. The low knoll	E. edge	60
36. The creek junction		60

Feature	Description	Pts.
37. The gully	On a contour bank	60
38. The creek junction		60
39. A large rock-surface	Middle of E. edge	60
40. The knoll	Summit	60
41. The gully	Lower part, between two small breakaways.	60
42. The gully	Upper part, N.E. side of a 3m boulder	60
43. A rock-surface 100/75m	The N.W. edge	70
44. The spur	At the top, on the W. edge of a 20/50m rock surface	70
45. The dam	S.W. side	70
46. the spur A FORD	Then 80m at 90 degrees N-SIDE	70
47. The low knoll		70
48. The gully	On a watercourse junction	70
49. A large rock-surface	E. edge	70
50. The gully	10m S. of a watercourse junction	70
51. A rock-surface 80/35m	N.W. tip	70
52. The spur		70
53. The summit	On a rocky highpoint	70
54. The watercourse	At the head	70
55. A grassy clearing 55/40m	S.W. corner. All in an extensive vegetated clearing 60/300m	80
56. A rock outcrop	In the jaws	80
57. A rock-surface 100/75m	S. edge	80
58. The shallow gully	On a track bend	80
59. The gully	E. side, on a small rock-surface	80
60. The knoll	E. side on rocky ground	80
61. A rock-surface 110/40m	(one of several) The N.W. tip	90
62. The broad summit	Central area	90
63. The gully	Head of a water course	90
64. The low spur	Upper part	90
65. The saddle		90
66. The rocky spur		90
67. Between the swamps	On the high ground	100
68. A rock-surface 50/40m	W. side	100
69. The summit		100
70. The low knoll	Southern part	100
71. A rock-surface 30/10m	W. tip	100
72. The gully	At a junction of three water-courses	100

66
750
170
920
250
1170